

ADARA PLUS

POST TOP LIGHT

IK08
IK RATING
FOR IMPACT
RESISTANCE



IP66
RATING
FOR DUST &
WATER
RESISTANCE

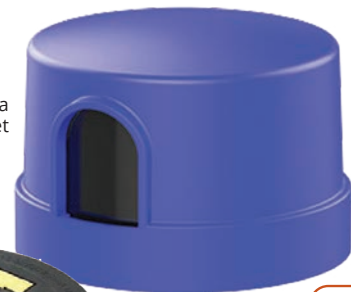
The Adara Plus Post Top Light is a versatile and energy-efficient LED lighting option, suitable for pathway and wayfinding applications. Features include low energy consumption, water/dust resistance, a replaceable driver unit and PE cell. The Adara Plus is very versatile, with a switchable colour temperature (choose between 3000K, 4000K or 5000K) and switchable wattage (18W, 30W, 45W or 60W), to suit your needs. Multiple mounting options available.



Optional
Twin Strut

COMES WITH INTELLIGENT ACCESSORIES

Nema
Socket



Photocell
Controller



- ✓ **Body Designed to Resist Water, Dust and Bird Droppings**
- ✓ **Dynamic Thermal Regulation**
- ✓ **Lower Energy Consumption by up to 60%**
- ✓ **Multiple Mounting Options Available**
- ✓ **Replaceable Driver Unit and Intelligent Lighting Control Options**



LEARN MORE

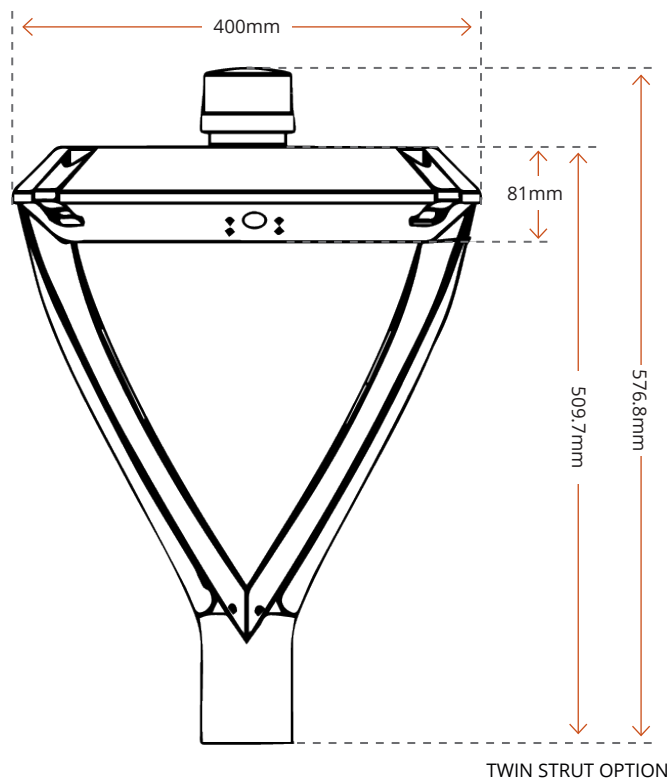
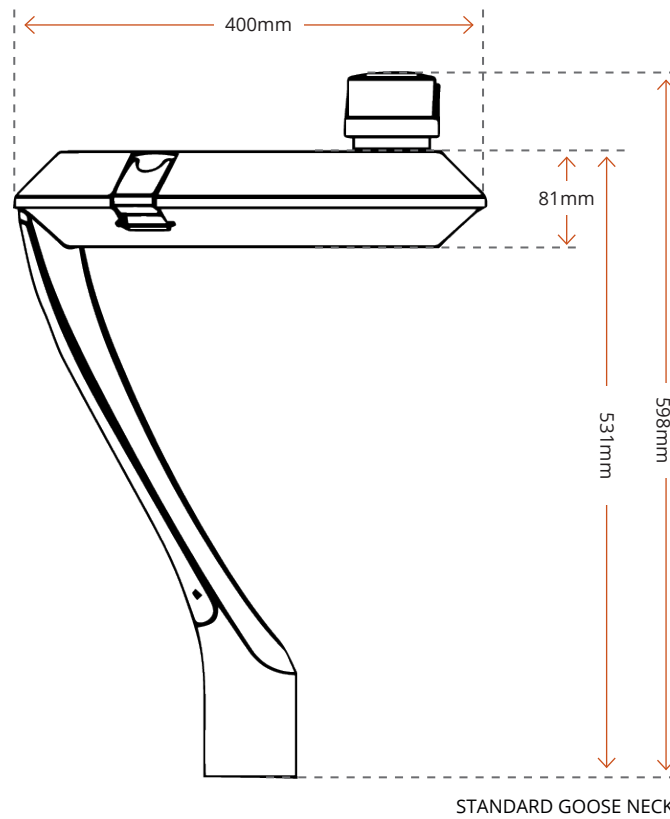
SPECIFICATIONS

ADARA PLUS POST TOP LIGHT

Product Name	ETG-07AD001
Power (W)	60 (dip-switch power change 18W / 30W / 45W)
Lumen (lm)	9,000 (18W: 2700lm 30W: 4500lm 45W: 6750lm)
Luminous efficacy (lm/W)	150
CRI	70 (Optional 80)
CCT (K)	Switchable (3000K/ 4000K/ 5000K)
Surge Protection (kV)	4kV line-line, 6kV line-earth
Input Voltage (AC)	100-240 (50/60Hz)
IP/IK Ratings	IP66 Weatherproof / IK08 Impact resistant
Luminaire Dimension (mm)	Ø400 x 81.1
Pole Dimension (mm)	Maximum Ø63
Weight (kg)	6.8
PF	<0.94
Driver	MOSO
Operating temperature	-30°C ~ +50°C
Finish	Powder coating
Body Colour	Aluminium alloy (no screws exposed) Silvery black (RAL9005)
Lens	PC Lens
Cover	Tempered Glass
LED Chip	SMD3030
Surge Protection	4kV line-line, 6kV line-earth
Protections	High standard anti-corrosion powder coating (AKZO) Coastal region safe (2000Hrs salt spray tested) Protection Class I/II
Materials	Die cast aluminium & PC
Operating temperature	-30°C ~ +50°C
Mounting Options	Gooseneck Twin Strut (ETG-07AD002)
Optional	-10V & 1-10V dimmable (range from 10% to 100%) DALI Control gear dim-to-off PE Cell 7 pin NEMA Socket as Zigbee communication Microwave motion sensor
Warranty	5 years

DIMENSIONS

ADARA PLUS POST TOP LIGHT





1300 410 485 | sales@etms.com.au | www.etms.com.au

