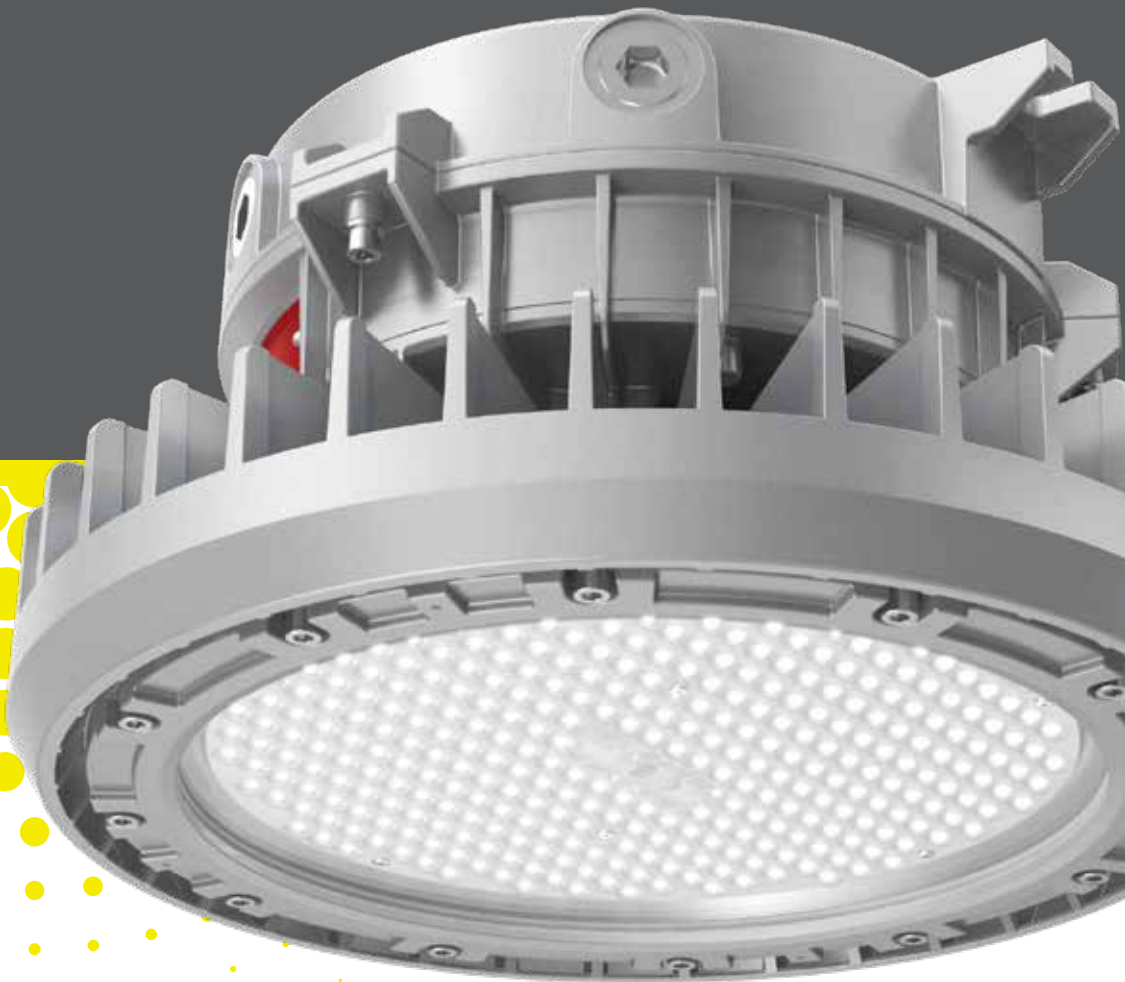




HA Highbay

Explosion Proof High Bay



EarthLight  TM
TRADE

Industrial & Commercial Lighting
earthlight.com.au

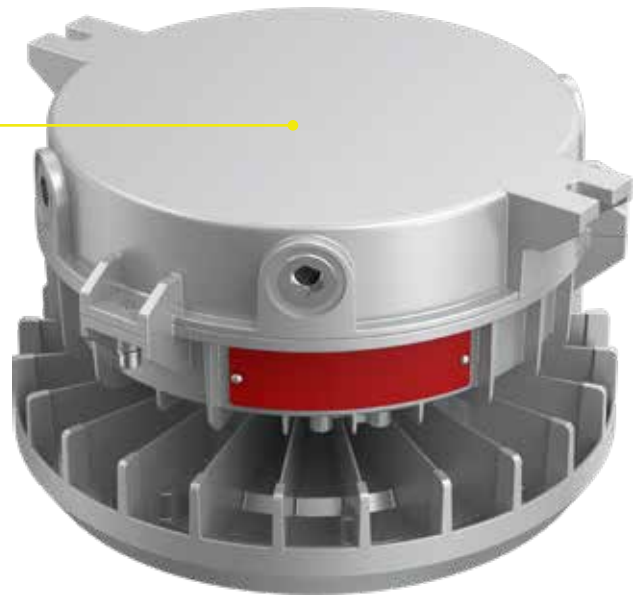
HA Highbay

Explosion Proof High Bay

The HA Highbay offers a comprehensive solution for any hazardous area lighting project. With heavy duty construction using high-strength and low-copper aluminum alloy, the HA Highbay is specially designed for use in Class I Division II environments.

Multiple Mounting Options

- ✓ Zero Uplight
- ✓ Plug and Play Wiring for Ease of Installation
- ✓ Multiple Lights can be Interconnected
- ✓ Flip-top for Easy Access to Components
- ✓ Anti-corrosive Diecast Aluminium Body
- ✓ IECEX and ATEX certified



earthlight.com.au
1300 410 485
sales@earthlight.com.au

HA Highbay

Specifications

| CODE | HA05-120 | HA05-150 | HA05-180 | HA05-200 | HA05-240 |
|----------------------------|---|----------|----------|----------|----------|
| Luminous flux (lm) | 16800lm | 21000lm | 25200lm | 28000lm | 33600lm |
| Luminous efficacy (lm/W) | 140lm/W | | | | |
| CCT | 5000K (2000K, 2200K, 2500K, 2700K, 3000K, 3500K, 4000K, 4500K, 5700K, 6500K optional) / Red, Green, Blue, Amber | | | | |
| Fixture Color | Grey | | | | |
| Color Rendering Index | Ra70/Ra80/Ra90 | | | | |
| Life Time of LED @ Ta=25°C | 96395 hrs-L80 153225 hrs-L70 | | | | |
| IP Rating | IP66 | | | | |
| IK Rating | IK08 | | | | |
| Operating Temperature | -40°C to + 65°C | | | | |
| Warranty | 5 Years | | | | |



HA Highbay

Dimensions

